



St Bede's  
Sixth Form College



# Sixth Form Option Subjects



Bishop Wilkinson  
Catholic Education Trust

# APPLIED SCIENCE

NB: WE ARE AWAITING CONFIRMATION FROM THE GOVERNMENT REGARDING CHANGES TO VOCATIONAL QUALIFICATIONS FROM 2025. AS SOON AS WE RECIEVE THIS INFORMATION WE WILL BE ABLE TO CONFIRM THE EXACT SUBJECT CONTENT AND ITS ASSESSMENT.



## Why study Applied Science at St. Bede's?

The Science department would love you to study BTEC Applied Science at St Bede's Sixth Form because it gives a good mix of knowledge in the 3 Sciences, alongside very valuable practical skills that employers and universities value. One subject covers all 3 Sciences – this course gives lots of future flexibility! The Science department think you should continue your education at St Bede's Sixth Form because we have a lot of experience helping students to achieve in BTEC Applied Science, and you will have dedicated Biology, Chemistry and Physics teachers for this course.

### What does the course involve?

Students study four units covering aspects of Biology, Chemistry and Physics including cells, tissues, atomic structure and bonding, chemical and physical properties of substances, waves and their applications and the three body systems: musculoskeletal, lymphatic and digestive. Alongside this students will also develop the essential skills underpinning practical scientific investigations.

The course is assessed through:

- Two coursework units (one in each year)
- 3 x 30min exams in Y12, and two exams in Y13.

### Our Students say...

"BTEC Science is such a fun course if you like a bit of all 3 sciences! I would highly recommend it for people wanting to try something new and expand their horizons! The course offers a good balance between coursework and theory for exams."

"I like how it is related to real life industries and easier to make a connection and apply it to everyday."

"I like the mix of all 3 Sciences."

"The transition from GCSE is easy as it uses the knowledge that was in those lessons."

"I like that it has coursework included so it's not just all exam focused."

### What can it lead to?

BTEC Applied Science students have a very wide range of possible higher education and career opportunities. The course provides UCAS points toward university entry, and employers of apprenticeships including Pharmaceutical, Engineering, Biological, Industry services such as Water Treatment, Environmental Monitoring and Agriculture, and many trades where the scientific knowledge, data and math skills and writing ability are an advantage.

### Which other subjects complement Applied Science?

- Biology
- Psychology
- Computer Science
- Physical Education
- Health and Social Care

### What are the entry requirements?

- Combined Science- Grade 5, 5 OR
- Separate Sciences- Grade 5,5,5 AND
- Maths- Grade 5

# ART AND DESIGN: FINE ART

A-Level



## Why study Fine Art at St. Bede's?

Art is a subject that allows you to express your own individual style and show how unique you are. It will not only develop your skills in a creative aspect, but it will also equip you with many skills that are needed in everyday life such as problems solving and creative thinking. If you follow on from GCSE, your work can be used as a starting point for your A Level work. Alongside all of this it is FUN!!! We pride ourselves in creating an atmosphere which allows students the freedom to express their ideas, challenge themselves creatively and achieve excellent results.

### What does the course involve?

Students produce practical and critical/contextual work in one or more areas of study, for example, drawing, painting, mixed-media, sculpture, ceramics, installation, printmaking, and photography.

- Component 1: Personal Investigation. Students are required to conduct a practical investigation, into an idea, issue, concept, or theme, supported by written material, leading to a finished outcome or a series of related finished outcomes.
- Component 2: Externally Set Assignment. Students select one examination question as a starting point. Preparatory work should be presented in any suitable format, such as mounted sheets, design sheets, sketchbooks, workbooks, journals, models, and maquettes.

### What can it lead to?

Art students have a wide range of possible higher education and career opportunities such as directly supporting progression to further and higher education in Art and Design and related subjects, as well as providing all students with a rich platform to inspire a lifelong interest in and enjoyment of Art and Design.

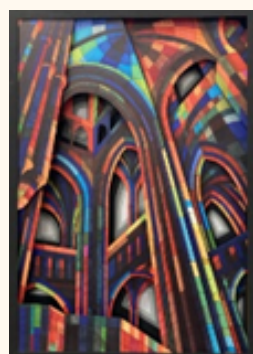
- Architecture
- Product design
- Web design
- Photo Journalism
- Film and Theatre design

### Our Students say...

Art is a great subject to take at A level; there is so much you can do, and it offers you the freedom to explore your ideas in any way you want; to express yourself creatively. You do not have to be great at drawing to take art and it is a great laugh as well!"

### Which other subjects complement Fine Art?

- English Language/Literature
- Religious Studies
- Health and Social Care
- Sciences
- Mathematics

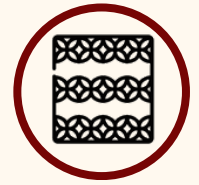


### What are the entry requirements?

- Art and Design OR Design and Technology- Grade 5
- External applicants will be required to submit a portfolio or art work

# ART AND DESIGN: TEXTILE DESIGN

A-Level



## Why study Textile Design at St. Bede's?

The Art/Technology department think you should continue your education at St Bede's Sixth Form because Textiles is a subject that allows you to express your own individual style and show how unique you are. It will not only develop your skills in a creative aspect, but it will also equip you with many skills that are needed in everyday life such as problems solving and creative thinking. If you follow on from Art/ Technology GCSE, your work can be used as a starting point for your A Level work. Alongside all of this it is FUN!!! We pride ourselves in creating an atmosphere which allows students the freedom to express their ideas, challenge themselves creatively and achieve excellent results.

### What does the course involve?

Students are required to work in one or more area(s) of textile design, exploring overlapping areas and combinations of areas: fashion design, fashion textiles, costume design, digital textiles, printed and/or dyed fabric and materials, domestic textiles and wallpaper, interior design, constructed textiles, art textiles.

- Component 1: Personal Investigation. Students are required to conduct a practical investigation, into an idea, issue, concept, or theme, supported by written material, leading to a finished outcome or a series of related finished outcomes.
- Component 2: Externally Set Assignment. Students select one examination question as a starting point. Preparatory work should be presented in any suitable format, such as mounted sheets, design sheets, sketchbooks, workbooks, journals, models, and maquettes.

### What can it lead to?

Textile students have a wide range of possible higher education and career opportunities such as directly supporting progression to further and higher education in Textile Design and related subjects, as well as providing all students with a rich platform to inspire a lifelong interest in and enjoyment of Textile Design.

- Clothing/Textile technologist
- Interior Design
- Fashion/Textile designer
- Furniture Design
- Retail Buyer

### Our Students say...

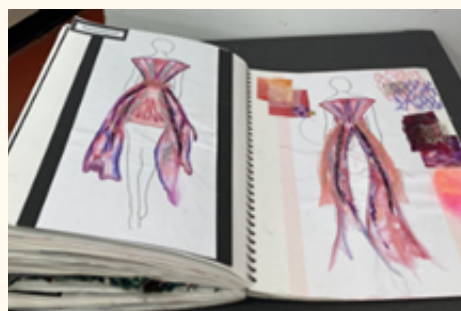
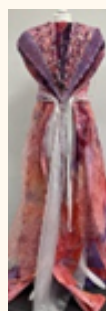
Textiles is a great subject to take at A level; there is so much you can do, and it offers you the freedom to explore your ideas in any way you want; to express yourself creatively. You do not have to be great at drawing to take art and it is a great laugh as well!"

### Which other subjects complement Fine Art?

- English Language/Literature
- Religious Studies
- Health and Social Care
- Sciences
- Mathematics

### What are the entry requirements?

- Art and Design OR Design and Technology- Grade 5
- External applicants will be required to submit a portfolio or art work



# BIOLOGY



## Why study Biology at St. Bede's?

The biology department here at St Bede's would love you to study with us because we're home to very experienced, devoted biology teachers with extensive knowledge of the course who care deeply about your success. We go above and beyond to support each of our students. Studying biology will enhance your understanding of the living world including how your own body works. You will have the opportunity to work in university laboratories as well as conducting field work at St Mary's lighthouse.

### What does the course involve?

At AS-Level students will continue to study key components of Biology from GCSE, including an extensive study into Cells, Exchange, Diseases and the Immune System. The A-Level Course also includes Communication and Homeostasis, alongside elements of Cellular Control. They will gain skills in planning, implementation, analysis, and evaluation.

AS-Level:

Unit 1: Breadth in Biology and Unit 2: Depth in Biology

A-Level

Unit 1: Biological Processes, Unit 2: Biological Diversity and Unit 3: Unified Biology

### What can it lead to?

Biology students progress to a broad variety of career areas because of the range of skills and knowledge they gain. Career choices include: medicine, dentistry, physiotherapy, radiography, forensic science, nursing, marine biology, pharmaceuticals (biological chemical industry), environmental management, teaching, biomedical sciences, biotechnology, and genetic research.

### Our Students say...

"The teachers here make it easier to understand complex lessons and provide lots of extra support"

"Lessons are very interesting and applicable to every day life, and you get to go on field trips!"

"The course is very rewarding and you learn how life works which helps you to understand the world better"

### Which other subjects complement Biology?

- Maths
- Chemistry
- Physics
- Physical Education
- Health and Social Care

### What are the entry requirements?

- Combined Science- Grade 6,6 OR
- Biology- Grade 6 AND
- Maths- Grade 6



# BUSINESS

## Why study Business at St. Bede's?

In Business A-level, students explore current business trends and real-world scenarios to understand how management and decision-making impact marketing, operations, finance, and HR. Experienced teachers provide insights from industry, linking specialist skills to diverse career paths. Students learn about business mechanics, innovation, and company cultures across different scales, from sole traders to global corporations.

### What does the course involve?

The Pearson Edexcel Level 3 Advanced GCE in Business is divided into four themes with three externally examined papers. Themes 1 and 2 introduce core business concepts and their application, while Themes 3 and 4 deepen knowledge and understanding with a focus on strategic business perspectives. Students are urged to approach business studies critically, embracing diverse viewpoints and questioning assumptions.

Paper 1: Marketing, people and global businesses (35%)

Paper 2: Business activities (35%)

Paper 3: Investigating business in a competitive environment (30%)

### What can it lead to?

Students will apply knowledge to real-life business contexts with updated content reflecting modern business issues. They will develop transferable skills supporting higher education and employment transition. Progression opportunities include higher education courses and careers in various fields like banking, sales, and public sector organizations.

### Our Students say...

"I chose Business because I originally had an ambition to one day run a business. Now, I thoroughly enjoy business because I find the inner workings of a business very interesting and intriguing".

"I think business at A Level is a great subject for those who missed the opportunity to take it at GCSE. It is very interesting and improves your knowledge of the world of business".

"Business is an enjoyable and interesting subject that is great for understanding how real-life businesses work".

### Which other subjects complement Business?

- Law
- Geography
- Maths
- Computer Science

### What are the entry requirements?

- English Language - Grade 5 AND
- Maths- Grade 5

# CHEMISTRY



## Why study Chemistry at St. Bede's?

Studying chemistry offers a profound understanding of the world around us, shedding light on the building blocks of matter and the interactions that drive natural phenomena. Knowledge of chemistry enables the development of new materials, fuels, and pharmaceuticals, directly impacting and improving our quality of life. Moreover, it cultivates critical thinking and problem-solving skills, as it requires analysing data, understanding complex systems, and making informed decisions. At St. Bede's we have a well-established Chemistry offer and we go above and beyond to support each of our students.

### What does the course involve?

At AS-Level students will continue to study key components of Chemistry from GCSE, including: Atoms; the Periodic table and periodicity; Group 2 and the halogens; Qualitative analysis; Enthalpy changes; Reaction rates and equilibrium; Hydrocarbons; Alcohols and haloalkanes; Organic synthesis; and Aromatic compounds. They will gain skills in planning, implementation, analysis, and evaluation.

AS-Level:

Unit 1: Breadth in Chemistry and Unit 2: Depth in Chemistry

A-Level

Unit 1: Periodic table, elements, and physical chemistry, Unit 2: Synthesis and analytical techniques and Unit 3: Unified Chemistry

### What can it lead to?

Chemistry is highly regarded by higher education establishments because of its multi-disciplined content. For some careers it is an essential requirement but will also prepare you for a variety of possible career options both inside and outside of science. Others simply wish to study the subject at a higher level to explore concepts and theories studied at GCSE in more depth.

- Medicine
- Dentistry
- Pharmacy
- Veterinary Science
- Chemical Engineering

### Our Students say...

"I chose chemistry because it's like being a detective, unraveling the mysteries of how everything around us works. Plus, who doesn't want to make some epic experiments in the lab?"

"I picked chemistry because it's all about the reactions, man! It's fascinating to see how tiny atoms can create massive changes in our world. It's like magic, but with science!"

### Which other subjects complement Chemistry?

- Maths
- Further Maths
- Biology
- Physics
- Computer Science

### What are the entry requirements?

- Combined Science- Grade 6,6 OR
- Chemistry- Grade 6 AND
- Maths- Grade 6

# CLASSICS



## Why study Classics at St. Bede's?

At St. Bede's, we are delighted to offer Classical Civilisation at A-Level. A new and dynamic course which complements our established history offer. Studying Classics at A-Level offers a unique and enriching academic experience. It allows you to delve into the rich tapestry of ancient civilizations, exploring the literature, history, philosophy, and languages of ancient Greece and Rome. This study fosters a deep understanding of the cultural and historical foundations that have shaped Western society and encourages a well-rounded and holistic approach to learning. A qualification in Classics is highly regarded by universities and employers, as it demonstrates intellectual rigor, a strong work ethic, and a capacity for detailed and thoughtful analysis.

### What does the course involve?

The course offers students the chance to study the classical civilisations of Ancient Rome and Greece, central to modern Western democracies. There will be three exams at the end of two years' worth of study. There are different question types in these exams, including shorter questions based on prompts, factual recall, and then more traditional essay style questions.

- Unit 1: The World of the Hero: Homer's Odyssey, Virgil's Aeneid
- Unit 2: Culture and the Arts: Imperial Image
- Unit 3: Beliefs and ideas: Politics of the Late Republic

### What can it lead to?

Classics graduates possess a unique set of skills that make them versatile and highly employable in various fields: adept at critical thinking; analytical reasoning; and have a deep understanding of cultural and historical contexts. Their training in ancient languages such as Latin and Greek hones their attention to detail and enhances their linguistic abilities. This diverse skill set ensures that classics graduates have a broad range of job prospects.

- Legal Profession
- Journalism
- Public Relations
- Politics

### Our Students say...

"I chose Classics because there's just something so epic about ancient myths and heroes. It feels like I'm diving into a whole different world!"

"I picked Classics because it's not just about dusty old books; it's about understanding human nature and how it's never really changed."

### Which other subjects complement Classics?

- History
- Politics
- English Literature/Language
- MFL
- Religious Studies

### What are the entry requirements?

- History- Grade 5 OR
- English Language- Grade 5



# COMPUTER SCIENCE

A-Level



## Why study Computer Science at St. Bede's?

At St Bede's we have fantastic teachers who have already built rapport with students through KS4 and KS3. The course includes engaging lessons linking theory and programming to show real world applications of skills and knowledge developed through the course.

The department also boasts a history of producing consistently excellent results.

### What does the course involve?

The course will cover:

- The internal workings of the (CPU)
- Data exchange
- Software development
- Data types and legal and ethical issues.
- Using computational thinking to solve problems.

Assessment will consist of:

- 20% NEA
- 40% Paper 1
- 40% Paper 2

### Our Students say...

"The enthusiasm of the teachers on the course allowed me to really engage with the course and gain an excellent grade."

"The NEA project is enjoyable, we made our own games which also meant I could continue with it once the course finished."

### What can it lead to?

Studying A-level Computer Science opens up a wide range of potential career and study opportunities. Graduates can pursue further studies in fields such as law, business, social sciences, or general education. This qualification equips learners with valuable skills that are highly sought after in various industries, making them well-positioned for successful careers in technology, business, research, and more.

### Which other subjects complement Computer Science?

- IT
- Physics
- Maths
- Law
- Business
- Psychology

### What are the entry requirements?

- Computer Science - Grade 5
- Maths- Grade 5
- Applicants should be able to demonstrate programming experience

# CORE MATHS



## Why study Core Maths at St. Bede's?

The Maths department would love you to study our subject at St Bede's Sixth Form because we value you and want you to be the very best you can be. We work tirelessly with you to help you through this important next phase. We are a leader for Core Maths in the area, with many colleges not offering this course. Level 3 Mathematical Studies (Core Maths) is a qualification designed for students who have achieved a grade 5 or above at GCSE. It helps to develop students' mathematical skills and thinking and supports courses such as A-level Psychology, Sciences and Geography as well as technical and vocational qualifications. Maths in general is known as a facilitating subject for Higher Education and Core Maths has been given recognition by universities as providing greater support to student progression.

### What does the course involve?

Core Maths includes analysis of data, maths for personal finance, estimation, spreadsheets, the normal distribution, probability, correlation and regression. They enable learners to strengthen the mathematical knowledge and skills they have learnt at GCSE so they can apply them to the problems they'll come across. The use of technology – in particular, spreadsheets – is an integral part of the course.

There will be two examination papers, at the end of the course, to assess all the content:

- Paper 1, a 1 hr 30 mins paper, assessing analysis of data, personal finance and estimation. This is worth 50% of the qualification.
- Paper 2a, a 1 hr 30 min paper, assessing critical analysis of data and models, the normal distribution, probability and estimation, and correlation and regression.

### What can it lead to?

Core Maths qualifications have been designed to support post-16 learners with the mathematical and statistical needs of their further study of other subjects, as well as for employment and everyday life. The course is valuable for learners preparing for a variety of technical and professional roles, as they learn about mathematical modelling, costing, risk and the use of spreadsheets. Financial problem solving, which is important for all learners no matter what their future ambitions, is also a feature of the qualifications. The qualification will give learners the mathematical skills to tackle problems in a range of authentic situations.

### Our Students say...

“Core Maths has helped me understand student loans, national insurance and income tax which will help me in the future at university”.

### Which other subjects complement Core Maths?

We would recommend you choose Core Maths as your fourth option alongside your three A Level subjects.

This course is for non A-Level Mathematicians.

- Sciences
- Computer Science/ICT
- Geography
- Business
- Psychology

### What are the entry requirements?

- Maths- Grade 5

# ENGLISH LANGUAGE

A-Level



## Why study English Language at St. Bede's?

English Language is a fascinating course because it will put the entire world into a new focus for you. From studying diversity and representation of key social groups such as gender, age and ethnicity, to exploring child language development and the future of English as a global language, you really will see society through a new lens!

### What does the course involve?

Paper 1 will see you exploring language and representation in a range of interesting unseen texts and then analysing transcripts on child language acquisition. Paper 2 will ask you to explore key social groups, understand why and how language changes over time and the future of the English Language itself.

There are two exam papers and a coursework folder which is worth 20% of the final grade. The coursework is comprised of a language investigation and a piece of original, creative writing and a commentary..

### What can it lead to?

Continuing with English Language at university is a very popular choice, as are journalism and education. That said, with an academic and well respected subject such as English Language, the world is your oyster!

### Our Students say...

'I understand much more about where I fit into the world after studying this course; I can't go back'.

'I found exploration into key social groups likes gender and sexuality incredibly interesting'.

'This course has really made me feel confident about the world we live in and how I can protest to make it a better place'.

### Which other subjects complement English Language?

- English Literature
- Law
- History
- RE
- Sociology
- Psychology

### What are the entry requirements?

- English Language- Grade 5

# ENGLISH LITERATURE

A-Level



## Why study English Literature at St. Bede's?

We offer an expert-led course with students able to engage with a range of teachers and resources to ensure they succeed. Alongside taught content, there are also opportunities to engage with live theatre, lectures and visits to enhance the texts we study.

### What does the course involve?

Students will study a range of texts including a Shakespearean Tragedy (*Othello*, *Hamlet* or *King Lear*); modern tragedy (*A Streetcar Named Desire*); poetry from across time; novels such as *Dracula* and *The Little Stranger*; and a non-examined assessment piece using *The Handmaid's Tale* as the anchor text.

This course includes exams (3 covering drama, poetry and prose texts) and non-examined assessment coursework in which students compare an anchor text with another of their choice. NEA questions are agreed with the teacher.

### What can it lead to?

Studying English literature could lead to careers in:

- Journalism
- Law
- Teaching (Primary & Secondary)
- Early Years
- Civil Service

### Our Students say...

"Great lessons where we explore the books in detail"

"Lessons are interesting and help me understand the books in so much depth"

"Teachers really want to help".

### Which other subjects complement English Literature?

- History
- English Language
- Classics
- Law
- Psychology
- Philosophy & Ethics

### What are the entry requirements?

- English Literature- Grade 5



# EPQ (EXTENDED PROJECT QUALIFICATION)

## Why study EPQ at St. Bede's?

This course is particularly useful for Applications to University and higher-level apprenticeships that require independent learning skills. It lends itself to a wide range courses and careers particularly those that require essay writing skills. Most students study for the Dissertation. This is a 5-6,000-word Essay on any topic of your choice based on research skills, a literature review, a discussion, a Conclusion and an Oral Presentation.

### What does the course involve?

This is a coursework only based AS Level, which is worth 50% of an A Level. As we offer a bespoke package, the length of course can vary from 6 months to a year and a half. but usually takes from 6 months to two years. Most complete the course in one year.

### What can it lead to?

This course is particularly valuable for those intending to go to University as it helps to develop independent study, referencing and essay writing skills. It also complements courses that require coursework as it can lead to higher grades. It can be beneficial in many careers to show planning, research and presentation skills.

### Our Students say...

'Doing an EPQ has been really good as it has shown me how to research topics effectively and how to evaluate sources and their reliability. It also gave me the chance to independently look into a topic that I find really interesting.'

'EPQ has been a great help. It has taught me to question the accuracy and reliability of sources, as well as preparing me for university by allowing me to do independent research and writing.'

### Which other subjects complement EPQ?

- History
- English Language
- Classics
- Law
- Psychology
- Philosophy & Ethics

### What are the entry requirements?

- English Language or Literature or any other essay based subject- Grade 5

# FURTHER MATHS



## Why study Further Maths at St. Bede's?

Studying Further Maths at A-level helps develop advanced problem-solving skills, critical thinking abilities, and logical reasoning. Understanding mathematical concepts at a deeper level can also prepare individuals for various academic and career opportunities, as well as help in making informed decisions in everyday life. Additionally, studying further maths can open doors to a wide range of STEM-related fields and enhance overall cognitive abilities. The Maths department would love you to study our subject at St Bede's Sixth Form because we value you and want you to be the very best you can be. We work tirelessly with you to help you through this important next phase.

### What does the course involve?

Core Pure content includes proof, complex numbers, matrices, vectors, algebra, series, calculus, polar coordinates, hyperbolic functions and differential equations. Statistics Major involves sampling, bivariate data, chi-squared tests, continuous random variables, inference and simulation. Mechanics Minor includes dimensional analysis, forces, work, energy and power, momentum and impulse and centre of mass.

- Core Pure
- Statistics Major
- Mechanics Minor

### What can it lead to?

Taking Further Maths at A Level is encouraged if you are planning to study a Mathematics BSc or closely related degree at university. This will increase your chances of attaining a place on the course you're after. Additionally, you will already be familiar with more of the content taught in the first semester.

- Statistics and data analysis
- Business and finance
- IT and engineering
- Teaching and research

### Our Students say...

"Studying Maths and Further Maths at St Bede's was an opportunity I'll always be grateful for. The support and teaching I received from my teachers was unparalleled, and alongside some reassurance when needed, I was able to step into my final exams with full confidence in my skills and knowledge. I was also supported in the application of my Data Science apprenticeship, which was successful in gaining a place on. With this said, not only did I enjoy my two years, but it opened doors to starting my career in an industry I never considered until undertaking my A-levels. I couldn't thank all the staff in the department enough for everything they did for me, and I'd highly recommend maths at St. Bede's to anyone considering it."

### Which other subjects complement Further Maths?

- Maths
- Chemistry
- Biology
- Physics
- Computer Science

### What are the entry requirements?

- Maths- Grade 8



# GEOGRAPHY

## Why study Geography at St. Bede's?

Geography provides a well-rounded education for all students. Students with a Geography-based education gain numerous skills such as the ability to think creatively and constructively, the ability to work autonomously or as part of a successful team and the confidence to lead, manage and understand a variety of complex situations and scenarios. Geography helps you make sense of the dynamic global world which we call home. Geographers are an asset to any university and/or business.

### What does the course involve?

The course comprises 3 sections covering both physical and human geography. These are Dynamic Landscapes, Dynamic Places and a Synoptic Unit which is an externally-assessed written examination drawing synoptically on knowledge and understanding from compulsory content drawn from different parts of the course.

Paper 1 Dynamic Landscapes (30%), Paper 2 Dynamic Places (30%), Paper 3 Synoptic Unit (20%), NEA based on fieldwork (20%)

### Our Students say...

“Geography helps us to understand space, place, people and how they all link together.”

“Geography has highlighted the beauty of our local area, that I would have otherwise taken for granted.”

### What can it lead to?

Our A Level Geographers have gone to study at a range of universities including Oxford, Lancaster, Leeds, Durham and Newcastle. Potential careers include :

- Meteorology
- Geophysics
- International development
- Climate science
- Conservation
- Geographical information systems
- Town planning
- Water management

### Which other subjects complement Geography?

- Business Studies
- History
- Biology
- Physics
- Chemistry
- Computer Science

### What are the entry requirements?

- Geography- Grade 5 AND
- Maths- Grade 4

# HEALTH AND SOCIAL CARE

NB: WE ARE AWAITING CONFIRMATION FROM THE GOVERNMENT REGARDING CHANGES TO VOCATIONAL QUALIFICATIONS FROM 2025. AS SOON AS WE RECEIVE THIS INFORMATION WE WILL BE ABLE TO CONFIRM THE EXACT SUBJECT CONTENT AND ITS ASSESSMENT.

BTEC



## Why study Health and Social Care at St. Bede's?

Studying Health and Social Care can provide you with valuable skills that are crucial for both university and employment. New qualifications are being developed that truly reflect the demands of our modern and evolving health and social care environment; qualifications that enable our students to apply themselves and give them the skills to succeed. These skills include empathy, tolerance, effective communication, and responsibility, cultural and social intelligence, critical thinking. Health and Social Care can serve as a strong foundation for various career paths, enabling you to collaborate with others and comprehend the needs of individuals. Additionally, a variety of units, dedicated staff, and smaller class sizes can offer you the necessary support to achieve excellent grades.

### What does the course involve?

Topics that could be covered include:

- Human lifespan
- Human biology and health conditions
- Health and social care in practice
- Creating safe environments for care
- Promoting health and education

### Our Students say...

"Studying health and social care lets me explore how we can really make a difference in people's lives, especially in our community."

"I chose health and social care because it's all about understanding others and building connections, which I think is so important these days."

### What can it lead to?

If you are thinking about a career in Health and Social Care, pair this subject with Btec Science for the perfect introduction to careers like Nursing, Midwifery, Physiotherapy, Biomedical sciences. Alternatively choosing health and social care alongside Psychology or Sociology will introduce careers in Social Work, Counselling or Criminal Justice.

### Which other subjects complement H&SC?

- Psychology
- Sociology
- Sport
- Biology
- English Language/Literature

### What are the entry requirements?

- General entry requirements with any combination of subjects
- No previous Health and Social Care qualification necessary





# HISTORY

## Why study History at St. Bede's?

History is truly fascinating as it fundamentally concerns all that it is to be human. It grants us perspective and allows us to indulge our curiosity. History demands empathy, critical thinking and ultimately, judgement. At St. Bede's we are an incredibly experienced and committed History department delivering consistently high quality, enjoyable, challenging lessons. We are also very keen to provide all our A-Level students with the chance to go on a foreign trip. Uncover hidden truths, challenge your perceptions, and emerge with a newfound perspective. Get ready to be captivated from start to finish!

## What does the course involve?

The course offers students the chance to study the shift in the balance of power between Crown and Parliament during the 1600s, complemented by a depth study of a 20th Century Revolution in Russia and a breadth study of one of Europe's powerhouses-Germany. You will be assessed by a combination of three exams and coursework.

- Unit 1: Britain-Conflict, Revolution and Settlement 1625-1701
- Unit 2: Russia in Revolution 1894-1924
- Unit 3: Germany United and Divided 1871 -1990
- Unit 4: Coursework (Causes of the Russian Revolution)

## Our Students say...

"The teaching is very good because the teachers are very charismatic, and they make the lessons engaging and interactive."

"The course builds nicely on what we studied at GCSE, which helped because we already had some knowledge."

"It's much more interesting than GCSE because it's more in depth."

"The trip to Berlin was the best trip. It wasn't just boring museums and tours, we had freedom to explore and the German currywurst we had was great."

"There is a feeling of security and familiarity with our teachers, who already know and care about us."

## What can it lead to?

History provides graduates with a wide range of transferable skills. A significant number of history graduates enter the legal profession, where their analytical and critical reasoning skills are highly valued, as well as library and archivist careers, where their research expertise and ability to select, manage and organise information, comes to the fore.

Politics, publishing, journalism, media and writing in all its forms are similarly suitable, alongside business and commerce, public sector administration and the charity and voluntary sectors.

## Which other subjects complement history?

- Religious Studies
- English Literature
- Classics
- Politics
- Sociology

## What are the entry requirements?

- History- Grade 5 OR
- English Language- Grade 5



## Why study IT at St. Bede's?

Students should study IT at St Bede's as teachers here have an excellent knowledge of course content as well as rapport with existing students from KS4. Students will also be supported throughout the course to develop their computer skills into practical and applicable skills in the modern world.

### What does the course involve?

Students will complete 3 sets of course work from dealing with Websites, product design, AR, social media and marketing while also completing 2 assessments based on IT and Information.

3 Coursework pieces

2 Exams

### Our Students say...

"The teachers make the course fun and enjoyable."

"The coursework looks to be very engaging."

### What can it lead to?

Studying CTEC IT offers a variety of opportunities for individuals interested in pursuing a career in the technology industry. Graduates can explore diverse career paths such as software development, network administration, cybersecurity, data analysis, and IT consulting. This qualification provides learners with practical skills and knowledge that are in high demand across different sectors, enabling them to secure rewarding positions in information technology.

### Which other subjects complement IT?

- Computer Science
- Physics
- Maths
- Law
- Business
- Psychology

### What are the entry requirements?

- General entry requirements with any combination of subjects
- No previous ICT qualification necessary



## Why study Law at St. Bede's?

Have you ever wondered: How is the law changing? What is the relationship between law and morals? Does the law provide justice? How is technology changing the law? What is the impact of globalisation? These are some of the thought provoking questions you will explore. Law students develop a range of skills including the application of legal rules and principles to present an argument, analysis and evaluation of the law, legal issues, and concepts. We have experienced teachers, who will bring to life the world of Law from their experiences of real-world industry.

### What does the course involve?

Studying A Level Law aims to give you an understanding of the role of law in today's society and raise your awareness of the rights and responsibilities of individuals.

By learning about legal rules and how and why they apply to real life, you will also develop your analytical ability, decision making, critical thinking and problem-solving skills. All these skills are highly sought after by higher education and employers.

### What can it lead to?

This qualification provides a suitable opportunity for the study of law or related courses in higher education. Equally, it is suitable for learners intending to pursue business careers or further study in business, social sciences or as part of a course of general education.

### Our Students say...

“I chose to study law because I’m hoping to gain a better understanding of the criminal justice system in the UK.”

“I chose law to look at the important changes to the law as I find it interesting how these affect people’s daily lives.”

### Which other subjects complement Law?

- Business
- History
- Politics
- English Language

### What are the entry requirements?

- English Language - Grade 5

# MATHS



## Why study Maths at St. Bede's?

Studying mathematics is essential for a multitude of reasons, extending far beyond the classroom and into everyday life. Mathematics sharpens critical thinking and problem-solving skills, equipping individuals with the ability to approach complex issues logically and systematically. Understanding mathematical concepts can also enhance one's ability to manage personal finances, make informed decisions, and interpret data in an increasingly digital world.

The Maths department would love you to study our subject at St Bede's Sixth Form because we value you and want you to be the very best you can be. We work tirelessly with you to help you through this important next phase.

### What does the course involve?

Pure mathematics includes proof, algebra, graphs, sequences, trigonometry, logarithms, calculus and vectors. Statistics includes working with data from a sample to make inferences about a population, probability calculations, using binomial and Normal distributions as models and statistical hypothesis testing. Mechanics includes kinematics, motion under gravity, working with forces including friction, Newton's laws and simple moments.

- Unit 1: Pure Mathematics and Mechanics
- Unit 2: Pure Mathematics and Statistics
- Unit 3: Pure Mathematics and Comprehension

### What can it lead to?

Many universities consider Mathematics as one of the most valuable A Levels. It is a pre-requisite for some courses (Physics, ICT, Accountancy, Mathematics, Statistics). You will have the opportunity to develop decision making and problem solving skills, transferable to any career path you choose to follow.

- Statistics and data analysis
- Business and finance
- IT and engineering
- Teaching and research
- Operational research

### Our Students say...

"My maths teachers always answered any question I had about the course. They provided me with examples of different question types that I could have in an exam and would explain the steps I should take to solve a problem. If I needed help on a piece of work, I could see them in lessons, message them over Teams or see them after school for help. They always explained things clearly and were happy to go over anything I missed or didn't understand."

### Which other subjects complement Maths?

- Further Maths
- Chemistry
- Biology
- Physics
- Computer Science

### What are the entry requirements?

- Maths- Grade 7

# MODERN FOREIGN LANGUAGES

A-Level



## Why study MFL at St. Bede's?

The MFL department would love you to study our subject at St Bede's Sixth Form because we are passionate about learning languages and being able to communicate with others around the world. We want to share our enthusiasm and knowledge with like-minded young people. Your future is at the heart of all that we do. Studying modern foreign languages can provide numerous benefits. It can enhance cultural awareness, improve communication skills, boost cognitive abilities, and open up opportunities for travel and career advancement. Additionally, learning a new language can broaden one's perspective and understanding of the world.

### What does the course involve?

In Year 12, students will learn about aspects of Hispanic/ French speaking society including modern and traditional values, cyberspace, sexual equality, the influence of famous people and cultural heritage.

In Year 13, students will learn about immigration, racism, integration, today's youth and popular movements.

Additionally, over the two years students study an authentic text and film and develop a greater fluency and deeper understanding of the grammar in their chosen language.

### Our Students say...

"One thing I've learned is that languages take you places and that they offer opportunities that simply cannot be found elsewhere. From doing 2 languages at both GCSE and A Level I feel more culturally aware than I ever thought possible- not only that, but it's surprising how much it helps your English too!"

"A-level Spanish is much more interesting than GCSE as you don't only learn Spanish you learn about the culture and relevant topics in society. Your conversational Spanish will improve but also your ability to talk about global issues and history. I really enjoy this part as it makes the process of learning a language more enjoyable."

### What can it lead to?

MFL students have a wide range of possible higher education and career opportunities such as joint honour degrees (e.g. Spanish and English), studying and working abroad, working as a translator, teacher, an interpreter, working in diplomatic service and many more.

In fact, studying a language provides you with an extra skill that is very appealing to prospective higher education providers and employers, regardless of your chosen career path.

### Which other subjects complement MFL?

- English Literature/Language
- History
- Politics
- Classics
- Geography

### What are the entry requirements?

- French- Grade 6 in French
- Spanish- Grade 6 in Spanish

# MUSIC



## Why study Music at St. Bede's?

Studying A-level music offers a unique opportunity to explore the rich world of musical theory, composition, and performance. It allows students to develop their creativity and express themselves through various musical styles and genres. The course encourages critical listening and analytical skills, as students examine historical contexts and the cultural significance of different works. Additionally, A-level music can enhance teamwork and communication skills through ensemble performances, while also fostering discipline and dedication through practice and rehearsals. Ultimately, this qualification can serve as a strong foundation for further studies in music or related fields, and it opens doors to a variety of career paths in the arts and beyond.

### What does the course involve?

**Performance:** Students complete a programme of performance as a controlled assessment. 25-35% weighting

**Composition:** Students complete a portfolio of compositions as controlled assessment. 25-35% weighting

**Listening and Appraising:** Students sit a formal exam where students answer questions in response to musical excerpts and set works. 40% weighting

### Our Students say...

"I love Music because every lesson is enjoyable. I get to work independently or as part of a group on a variety of musical pieces.

I am always around the music rooms in my free periods and spare time practicing, not just for pieces related to the course but also for school shows and performances."

"Staff in the department have really helped me to develop my confidence and are always on hand to offer advice and support."

### What can it lead to?

The A Level Music course is an excellent way to prepare for musical courses at universities. Music is a highly desirable subject for university applicants for most courses, due to the combination of academic and creative qualities necessary for successful completion of the course.

In 2011, the Confederation of British Industry outlined the seven skills that define employability: self-management, teamwork, business and customer awareness, problem solving, communication, numeracy, and IT skills. The 2013 alumni survey from the University of Nottingham concluded that music graduates were among the most employable due to the development of these skills during their studies.

### Which other subjects complement Music?

- English Literature/Language
- History
- Politics
- Classics
- Maths

### What are the entry requirements?

- Music- Grade 5 AND/OR
- The ability to perform at an instrumental/vocal Grade 5 level

# POLITICS



## Why study Politics at St. Bede's?

This course is designed to ignite a passion for understanding the complex dynamics of power, governance, and political thought. Our experienced and enthusiastic faculty members are dedicated to providing a stimulating and supportive learning environment. Through engaging lessons, lively debates, and critical analysis, students will develop valuable skills in research, argumentation, and critical thinking. Our aim is to inspire students to become informed and active citizens, equipped to navigate and influence the political landscape of the future. Whether you aspire to a career in politics, law, journalism, or simply wish to gain a deeper understanding of the world around you, A-Level Politics at St. Bede's is an excellent choice. Join us and embark on a journey of discovery and empowerment.

### What does the course involve?

Students will delve into the intricate workings of political systems, both in the UK and internationally, exploring topics such as democracy, justice, and political ideologies. They will gain knowledge and understanding of the changing nature of politics and the relationships between political ideas, institutions and processes.

- Unit 1: UK Politics and Core Ideas
- Unit 2: UK Government and Non-Core Political Ideas
- Unit 3: Comparative Politics-The USA

### What can it lead to?

Politics provides graduates with a wide range of transferable skills. Principally, students develop the ability to understand and analyse issues and events to a high level of competence. At first glance, politics graduates might appear to be only destined for Parliament, but the skills you have gained will prepare you well for numerous careers and remain highly sought after skills for employers.

- Diplomat
- political correspondent
- journalist
- press officer
- In the Civil Service

### Our Students say...

"I chose Politics because I wanted to understand how the world works and why things are the way they are. Plus, it's just so interesting to see how decisions made in Parliament affect our everyday lives."

"I chose Politics because I think it's important to be informed about the issues that matter. It's not just about exams; it's about being part of something bigger."

### Which other subjects complement Politics?

- History
- Classics
- English Literature/Language
- MFL
- Religious Studies

### What are the entry requirements?

- English Language- Grade 5 OR
- History- Grade 5

# PSYCHOLOGY



## Why study Psychology at St. Bede's?

Psychology is the scientific study of the 'mind and behaviour' and one of the most popular subjects chosen by our students in Sixth Form. Psychology is everything; there is literally no aspect of the human experience that cannot be investigated, in some way or other, using the methods of experimental Psychology. By studying Psychology at A Level, you will gain the knowledge and skills of these experimental methods and a genuine insight into the people around you. Here at St. Bede's, we offer AQA Psychology as our subject teachers have over ten years of experience with this exam board. We select topics that we know our students will enjoy and achieve success in. As we do not offer Psychology at GCSE, taking Psychology at A Level is an exciting opportunity to study something completely new and different to what you have experienced before. We love it, and we know you will too!

### What does the course involve?

A Level Psychology is assessed with three papers at the end of Year 13, each paper is two hours long and equally weighted. There is no coursework in this subject. You will cover the content for Paper 1 and Paper 2 in Year 12 and the content for Paper 3 in Year 13.

- Paper 1: Introductory Topics in Psychology
- Paper 2: Psychology in Context
- Paper 3: Issues & Options in Psychology

### What can it lead to?

There are a large variety of areas that you can specialise in if you choose to continue to study Psychology after A level such as; Clinical, Experimental, Forensic, Educational, Sport and Occupational Psychology. Along with these options, the study skills you gain will teach you how to manipulate data and conduct your own research whilst helping you understand the behaviour of others (a useful skill for any job!).

- Counselling
- Educational Psychologist
- Forensic Psychologist
- Academic Teaching and Research

### Our Students say...

"The teachers are really enthusiastic and the information sheets help you to keep organised."

"You learn something new every lesson which makes the lessons interesting. I always look forward to them."

"A lot different to what I expected. No two lessons are the same... in a good way. Do It!"

"I love Psychology! Learning about why people do things and act the way they do. Best subject to pick by far!"

### Which other subjects complement Psychology?

- Biology
- Maths
- History
- Sociology
- English Language

### What are the entry requirements?

- English Language- Grade 5 AND
- Maths- Grade 5 AND
- Science- 5,5 (combined) OR 5,5,5 in separate Sciences



# PHYSICS



## Why study Physics at St. Bede's?

The Physics department would love you to study our subject at St Bede's Sixth Form because you get to find out how things work and learn about the very, very small e.g. subatomic particles, quantum physics, radioactivity, and quarks without really being able to see any of it. It's mind blowing. You can also explain the world around you and link things in your everyday life to all of the different aspects of the course. The A-level course weaves the topics together really well so in Y13 the topics start to overlap and the different branches of Physics start to build together to explain some really fascinating topics e.g. medical imaging and astrophysics.

## What does the course involve?

Across the two years students will develop practical skills and the foundations of physics through 12 practical activity groups, carrying out investigations linked to acceleration due to gravity, the Planck constant, resistivity of a wire, Kirchhoff's circuit laws, oscilloscopes, ionising radiation, lasers, simple harmonic motion, stopping distances, springs in series and parallel and the discharge of a capacitor.

Paper 1: Modelling Physics

Paper 2: Exploring Physics

Paper 3: Unified Physics

## Our Students say...

"Teachers are supportive and can be relied on and dedicated assistance is provided."

"It's great to learn about the scenarios we experience daily and understand the science behind them."

"It's great to apply mathematical skills alongside A-level mathematics."

"There's a sense of achievement when you get to the end of a problem."

"Y12 content builds on GCSE topics so you're eased into the A-level content."

## What can it lead to?

Physics students have a wide range of possible higher education and career opportunities such as at university: engineering (aeronautical, civil, electrical, mechanical), medicine, economics, mathematics, sports science, forensics, law, computing, physics. Physics graduates are able to pursue careers in a variety of fields:

- Space
- Medicine
- Engineering
- Film and gaming
- Sustainability

## Which other subjects complement Physics?

- Maths
- Further Maths
- Chemistry
- Biology
- Computer Science

## What are the entry requirements?

- Combined Science- Grade 6, 6 OR
- Physics- Grade 6 AND
- Maths- Grade 6
- You MUST study A Level Maths alongside Physics.



## Why study Politics at St. Bede's?

If you have an enquiring mind, a thirst for knowledge and a love of higher level thinking and debate, this course could be for you. You will engage with some of the greatest thinkers from ancient Greek philosophy to mediaeval scholars and to the most up to date experts in the field of Theology, Philosophy and Ethics. You will consider some of the biggest questions in life and be helped to learn about some of the greatest mysteries of faith and science while developing your ability to explain, evaluate and analyse in a critical way.

### What does the course involve?

In Philosophy, Ethics and Religion you will cover a wide range of topics from the field of Philosophy, Theology and Ethics. There are three Components each comprising four themes:

C1: A Study of Christianity - Religious figures; Sacred texts; Concepts and life; Social and historical developments in thought and practices.

C2: Philosophy of Religion - Arguments for the existence of God; Challenges to religious belief; Problem of evil; Belief as a product of the human mind; Religious experience and religious language.

C3: Religion and Ethics - Ethical thought; Deontological ethics; Teleological ethics, Determinism and free will.

### Our Students say...

I chose Religious Studies because...

“This subject has enlightened me and has made me far more open minded. I has boosted my confidence through class debates and it has allowed me to participate more in class debates.”

“I really enjoy this subject as it allows you to learn about Christianity at a deeper level and focuses on the issues that it can create.”

### What can it lead to?

Politics provides graduates with a wide range of transferable skills. Principally, students develop the ability to understand and analyse issues and events to a high level of competence. At first glance, politics graduates might appear to be only destined for Parliament, but the skills you have gained will prepare you well for numerous careers and remain highly sought after skills for employers.

- Diplomat
- political correspondent
- journalist
- press officer
- In the Civil Service

### Which other subjects complement Politics?

- History
- Classics
- English Literature/Language
- Psychology
- Sociology

### What are the entry requirements?

- Religious Studies- Grade 5 OR
- English Language- Grade 5

# SOCIOLOGY



## Why study Sociology at St. Bede's?

Sociology is a compelling subject that explains social phenomena like changes in childhood, crime, success disparities, and extremist group participation. It enhances critical analysis, evaluation, and essay-writing skills. Sociology involves debates on topics like childhood improvements and future cybercrime dangers. It is a social science using scientific methods for research, providing valuable skills for university and various careers.

### What does the course involve?

In Year 12, topics include:

- Education: equal opportunities, teacher labeling
- Families and Households: family influence, societal importance
- Research Methods: studying society methods

In Year 13, additional topics cover:

- Crime and Deviance: criminal types, police targeting
- Beliefs in Society: religious fundamentalism, religion's societal impact

A Level Sociology is assessed by 3 x 2 hour exams at the end of two years.

### What can it lead to?

Sociology is a great route to:

- Social work
- Teaching
- Law
- The police force
- Probation or prison service
- Personnel management Public relations
- The Health Service
- Journalism

### Our Students say...

“The course has given me a real insight into how society functions and helped me to appreciate current affairs better.”

“It relates to my own life. It allows me to use my day to day experiences and apply them to what we do in lessons. The debates are great too.”

“It is a fascinating subject which has informed me of the society we live in due to the depth of the subject and the knowledge that it brings.”

### Which other subjects complement Sociology?

- Politics
- Psychology
- Philosophy and Ethics
- Law
- English Language/Literature
- History

### What are the entry requirements?

- English Language- Grade 5

# SPORT

NB: WE ARE AWAITING CONFIRMATION FROM THE GOVERNMENT REGARDING CHANGES TO VOCATIONAL QUALIFICATIONS FROM 2025. AS SOON AS WE RECEIVE THIS INFORMATION WE WILL BE ABLE TO CONFIRM THE EXACT SUBJECT CONTENT AND ITS ASSESSMENT.

CTEC



## Why study Sport at St. Bede's?

The Cambridge Technical qualification in Sport and Physical Activity is a welcome addition to our PE provision. The course provides students with the practical knowledge and skills required to progress within the Sporting sector. In the first year you will study the effect of Physical Activity on the body (Anatomy & Physiology) and complete modules including Sports Coaching & Leadership. In the second year you will learn about Sports Organisations both inside and outside the UK and the importance of increasing participation in sport and physical activity.

### What does the course involve?

Assessment takes many forms on the course. There are 2 formal written exams:  
Exam In Year 12 (Year 1 of course)  
Exam in Year 13 (Year 2 of course)

Other assessment is ongoing over the two years and takes the form of both practical and written work.

### What can it lead to?

There are a multitude of progression routes available after studying CTEC Sport & Physical Activity, including: progression to University, Apprenticeships, Coaching, Leisure Management, Sports Development and Events Management.

### Our Students say...

“Studying CTEC Sport gave me an insight into the different aspects of sport that I was interested in and it also helped to prepare me for studying to become a Physiotherapist at University.”

“ I wanted to know what working in the sports industry would be like and the CTEC course gave me opportunities to gain some real world experience and helped me to get coaching experience.”

### Which other subjects complement Music?

- English Language
- Psychology
- Sociology
- Any of the Sciences, particularly Biology or Applied Science

### What are the entry requirements?

- Combined Science- Grade 4,4 OR
- Separate Science- Grade 4,4,4